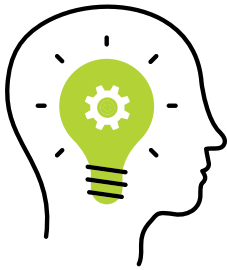




advitech

Engineering and environmental consulting

Using innovation, creativity and a wealth of knowledge, Advitech solves complex problems and delivers solutions that achieve your technical, compliance and business needs.



Engineering Consulting

- Mechanical, structural, civil, process
- 3D modelling and design drafting
- Asset integrity and reliability
- Engineering compliance



Risk and Compliance

- Functional safety
- Risk assessment
- Hazardous chemicals
- Hazardous area classification



Environmental Consulting

- Acoustics
- Air quality
- Contaminated land
- Environmental monitoring



Applied Mathematics

- Data analytics
- Decision support and automation
- Mathematical modelling
- Mathematical optimisation
- Operations research
- Statistical analysis



Sustainability and ESG Consulting

- Environmental, Social and Governance (ESG)
- Path to net zero
- Energy and Environment Management Systems
- Emissions reduction schemes
- Circular economy



Project Services

- Project management
- Strategic engineering support



advitech

t. +612 4924 5400 e. mail@advitech.com.au w. www.advitech.com.au

A member of Emergent Group